

## RAKU-PUR® & RAKU-POX® adhesives

Quality connects – Adhesives for safe connections.



**RAMPF®**  
discover the future

**Tailor-made adhesives:** Quality connects – no matter whether you want to bond wood with plastic, acrylic glass with aluminum or other materials – adhesive systems from RAMPF Giessharze create a safe and reliable connection. You find our products where long lasting connections are important.

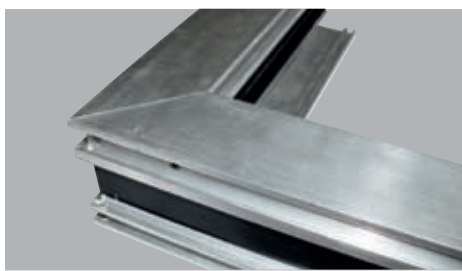
## RAKU-PUR polyurethane-adhesives

RAKU-PUR	Colour	Hardness	Pot life at 20 °C (min)	Density at 20 °C (g/ml)	Viscosity A-component at 20 °C (mPa*s)	Viscosity B-component at 20 °C (mPa*s)	Mixing ratio A:B (weight.-%)
49-2803	white	Shore D 50–60	35:00	1.54–1.58	150,000 – 200,000	250–400	100:20
49-2804	beige	Shore D 70–80	35:00	1.36–1.40	45,000–55,000	100,000–130,000	Vol.-%: 100:100
49-2452	white	Shore D 63	2:00–3:00 at 100 °C	1.20–1.24	ca. 200,000	–	–
49-2230	beige	Shore D 55–65	02:40	1.10–1.14	1,100 – 1,300	300–400	100:42
49-2324	beige	Shore D 60–70	01:15	1.50–1.55	6,500 – 8,500	300–400	100:20
50-2436	beige	Shore D 80–85	00:15	1.14–1.17	2,700 – 3,700	220–310	100:116
▲ 49-2640	beige	Shore A 50–55	ca. 3:00	1.27–1.31	50,000 - 100,000	30,000–50,000	100:80
49-2453	beige	Shore A 40–60	120:00	1.64–1.68	ca. 100,000	300 – 400	100:3.3

## RAKU-POX epoxy resin-adhesives

RAKU-POX	Colour	Hardness	Pot life at 25 °C (min)	Density at 25 °C (g/ml)	Viscosity A-component at 25 °C (mPa*s)	Viscosity B-component at 25 °C (mPa*s)	Mixing ratio A:B (weight.-%)
49-2221	beige	Shore D 75–80	60:00	1.10	10,000–50,000	20,000–30,000	100:60
49-2222	beige	Shore D 80	ca. 08:00	1.10	10,000–50,000	200–500	100:50
▲ 49-2224	beige	Shore D 70–75	ca. 70:00	1.10	2,000–2,300	450–750	100:20

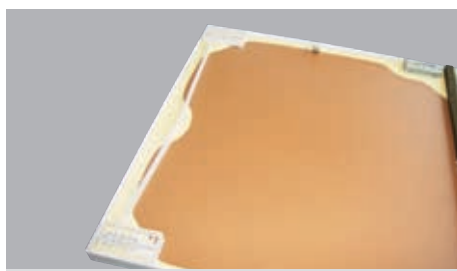
▲ new products



Windows



Caravan doors



Cover of household appliances

Special properties	Application area	Application examples
<ul style="list-style-type: none"> <li>» Structural 2-component-adhesive for converting on mixing and dispensing machines</li> <li>» tough-elastic after curing</li> <li>» good adhesion to aluminum</li> <li>» weather- and moisture-resistant</li> </ul>	Metal adhesion	Window profile
<ul style="list-style-type: none"> <li>» Structural 2-component-adhesive for hand-converting in cartridges</li> <li>» tough-elastic after curing</li> <li>» good adhesion to aluminum</li> <li>» weather- and moisture-resistant</li> </ul>	Metal adhesion	Window profile
<ul style="list-style-type: none"> <li>» 1-component-adhesive thermosetting at min. 85 °C for converting in cartridges</li> <li>» tough-elastic after curing</li> <li>» good adhesion to aluminum</li> <li>» weather- and moisture-resistant</li> </ul>	Metal adhesion	Window profile
<ul style="list-style-type: none"> <li>» Structural 2-component-adhesive</li> <li>» high impact strength</li> <li>» very high resistance against mechanical impact</li> <li>» good adhesion to plastics and metals</li> </ul>	Plastics adhesion (e.g. ABS, styrofoam)	Adhesion of sandwich elements, e.g. Caravan doors
<ul style="list-style-type: none"> <li>» Structural 2-component-adhesive</li> <li>» high impact strength</li> <li>» very good adhesion to wood and plastics (e.g. ABS)</li> </ul>	Plastics/wood adhesion	Adhesion of applying boards, e.g. for washing machines and tumble dryers
<ul style="list-style-type: none"> <li>» Structural 2-component-adhesive</li> <li>» good and very fast adhesion on wood and compressed wood boards</li> </ul>	Wood adhesion	Adhesion of wooden parts in the furniture industry (corpus adhesive)
<ul style="list-style-type: none"> <li>» 2-component-adhesive</li> <li>» very high elongation and tear-resistance</li> <li>» good adhesion to metals and plastics</li> </ul>	Metal and plastic adhesion (e.g. PP, PA)	Universal adhesive, particularly suitable for adhesion of metals and plastics after pretreatment
<ul style="list-style-type: none"> <li>» 2-component-adhesive</li> <li>» soft and elastic</li> <li>» slow curing</li> <li>» good adhesion on glass and aluminum</li> </ul>	Glass adhesion	Vision panel for control cabinets

Special properties	Application area	Application examples
<ul style="list-style-type: none"> <li>» 2-component-adhesive</li> <li>» long pot life</li> <li>» curing at room temperature</li> <li>» convertible after 16 hours</li> <li>» slightly thixotropic</li> <li>» high resistance against chemicals</li> </ul>	Universal applications, suitable for high temperature-applications	Universal adhesive, particularly suitable for adhesion of metals after pretreatment
<ul style="list-style-type: none"> <li>» 2-component-adhesive</li> <li>» short pot life</li> <li>» curing at room temperature</li> <li>» convertible after 16 hours</li> <li>» slightly thixotropic</li> <li>» high resistance against chemicals</li> </ul>	Universal applications, suitable for high temperature-applications	Universal adhesive, particularly suitable for adhesion of metals after pretreatment
<ul style="list-style-type: none"> <li>» 2-component-adhesive</li> <li>» long pot life</li> <li>» low viscosity and good fluidity</li> <li>» solvent free</li> <li>» curing at room temperature</li> <li>» convertible after 16h</li> <li>» for applications with low thermal stress until 60 °C</li> </ul>	Universal applications, suitable for low temperature-applications	Solvent-free universal adhesive with low viscosity, particularly suitable for adhesion of metals or paper after pretreatment



Furniture



Control cabinet

## RAMPF Giessharze worldwide.



### **RAMPF Group, Inc.**

P.O. Box 930 352  
50714 Century Ct.  
Wixom, MI 48393, USA  
T +1 (248) 295 0223  
F +1 (248) 295 0224  
E [info@rampf-group.com](mailto:info@rampf-group.com)  
[www.rampf-group.com](http://www.rampf-group.com)

### **RAMPF (Taicang) Ltd.**

Taicang Economy Development Area  
No. 8 North Lou Jiang Road,  
Taicang 215400, Jiangsu Province  
P.R.China  
T +86 (0) 512 5328 5051  
F +86 (0) 512 5328 5060  
E [info@rampf-group.com.cn](mailto:info@rampf-group.com.cn)  
[www.rampf-group.com.cn](http://www.rampf-group.com.cn)

### **RAMPF Group Japan, K. K.**

Oriental Shin-Osaka Building 2F  
Nishinakajima 7-1-26, Yodogawa-ku  
Osaka, 532-0011, Japan  
T +81 (0) 6 6101-0769  
F +81 (0) 6 6101-0771  
E [info@rampf-group.jp](mailto:info@rampf-group.jp)  
[www.rampf-group.jp](http://www.rampf-group.jp)

### **Service worldwide:**

Further distributors can be found under  
[www.rampf-giessharze.com](http://www.rampf-giessharze.com)

Headquarters  
**RAMPF Giessharze GmbH & Co. KG**  
Albstr. 37  
D-72661 Grafenberg, Germany

T +49 (0) 7123 9342-0  
F +49 (0) 7123 9342-2444  
E [info@rampf-giessharze.de](mailto:info@rampf-giessharze.de)  
[www.rampf-giessharze.de](http://www.rampf-giessharze.de)



**RAMPF**<sup>®</sup>  
discover the future